

Framing Focus

Colorful CUSTOM MATS

Framing artwork can be fun. Posters, sports memorabilia, and animation art, for example, all lend themselves to bright colors. Enhancing art with color is a refreshing change and brightens up any home or office decor.

If you are a collector or have any pieces of animation art, the first thing you'll notice are the vibrant, striking colors. And we are the experts who can help you choose which colors in the artwork should be used for the matting and framing. In the example shown here, Fred and Barney come alive with smart color choices. A bright blue extends the sky, surrounded by a thin bright orange second mat to highlight Fred's outfit, with the third yellow mat pulling it all together to match Barney's hair. The bright orange frame completes the design.

Abstracts also lend themselves to powerful, colorful designs. We can make interesting, unique designs to perfectly fit each piece. This abstract piece was framed using bands of color instead of one flat mat. The blue, red, and yellow matboards picked up the colors in the artwork. Surrounded by a tangerine frame, the piece pops.

Even a traditional painting can be made to look up to date using a rich colored mat and metal frame. The wider, deeper blue mat was chosen to pull that color out of the painting and liven things up. A white frame surrounds the art, but it is followed by a thin beeswax color that is highlighted by the walnut and silver leaf frame.

We look forward to seeing your artwork and helping you decide on a colorful custom made mat and frame design. ■

All matboards by Bainbridge

Top two frames by Nielsen

Bottom frame by Nurre Caxton

All frame designs courtesy of Gibson Glass and NielsenBainbridge



Fred and Barney are surrounded with color using bright colored mats with a complementing tangerine frame.



Bands of color create the mat for this vibrant work. The contrasting frame adds to its beauty.



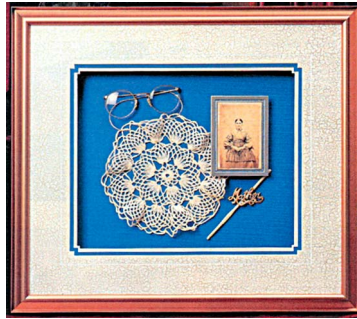
A small painting surrounded by a rich mat and frame will surely be a focal point of any room.

Framing Needleart

Needleart is no less a work of art than a painted canvas; the stitcher simply took up a needle and thread instead of a brush and paints."

This statement emphasizes the value and importance of needlework through the ages. Perhaps you have some doilies or handkerchiefs from your great-great-grandmother lying around the attic. Or maybe you toiled over a needlepoint to hang in the living room for all to admire. Is there a sampler with a saying that you would like to hang in the hallway?

We pride ourselves on framing needleart, taking extra



Needleart like this doily requires its edges to be visible for proper and attractive presentation.

care to preserve your fondest memories. There are two techniques that are common when framing needleart: lacing and couching. Lacing is used when the edges of a work must be covered due to wear and tear or for aesthetic reasons. Couching allows the entire needleart to be showcased. Any textiles, including clothes, scarves, dresses, and more, can be mounted and framed for display. You may even add other sentimental objects to create a one-of-a-kind frame design. Stop by and see some examples and let us show you our ideas for creating a custom design for your beautiful needleart. ■

Mailing Address Here

Your promotional or other information here