

Framing Focus

FEATURING FABRIC

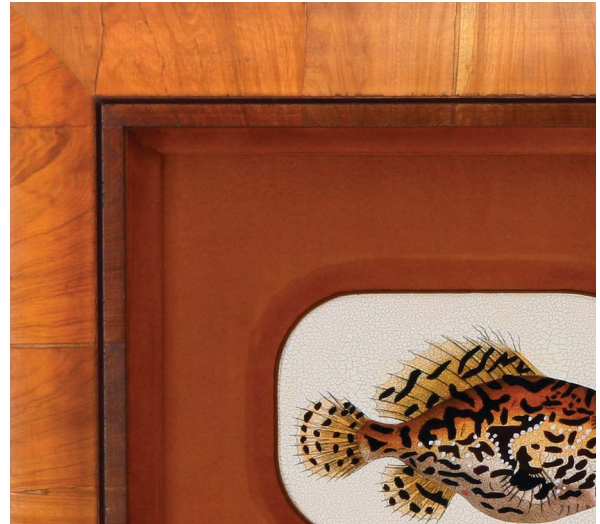
Do you have a favorite print waiting for just the right frame? Haven't found what you are looking for? Let us design the perfect piece to fit your style and your wall.

There are numerous ways to make your framed artwork unique and personal in nature. Incorporating fabric in the design is an excellent way to expand your palette of color and texture. Imagine a smooth silk or soft suede mat surrounding your favorite etchings, sketches, or even objet d'art.

Fabric is a very versatile material, which means your design possibilities are wide open. Maybe straight edges and basic squares and rectangles don't cut it for you. Fabric can be stretched smooth to cover rounded corners and arches. Imagine your sparkling collectible coins nestled in circular cutouts and surrounded by deep, rich velvet.

Looking for just the right wedding gift? Surprise the happy couple by framing their wedding invitation with a satin liner in their color scheme. Or simply add a suede mat to a print that will hang above a suede couch or loveseat. One small detail can complete the look of a room.

Adding fabric to your framed projects offers you the chance to create a one-of-a-kind look. We can help you choose colors and textures to match the item you are framing or even the room where the frame will hang. We can make your ideas a reality. ■



The fabric's ability to stretch when covering rounded corners or openings makes it a versatile material. Here, a dark brown suede fabric contrasts the creamy background of the three fish etchings.



In this piece, the fabric color, color of the stone musicians, and the frame finish blend together to create a cohesive look.